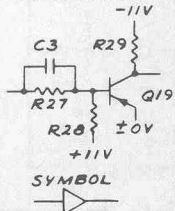
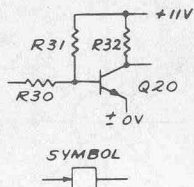


TYPICAL NOR-1 CIRCUIT



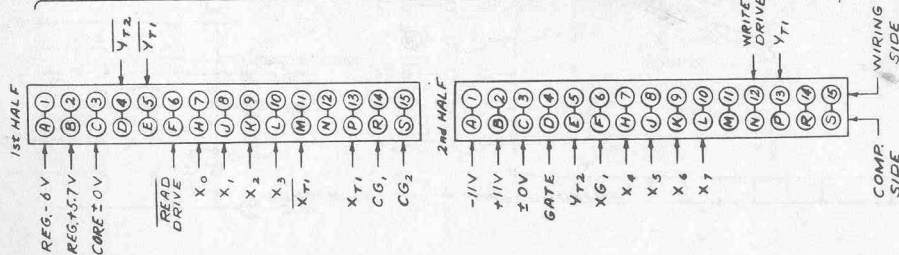
TYPICAL DRIVER CIRCUIT



COMPONENT	SIZE, TYPE	QTY.
R1 THRU R8	6.8K	8
R9, 11, 13, 15, 17, 19, 21, 23.	820Ω	16
R10, 12, 14, 16, 18, 20, 22, 24		
Q1, 3, 5, 7, 9, 11, 13, 15, 17	37676-2	9
Q2, 4, 6, 8, 10, 12, 14, 16, 18	38360	9
C1, C2	5μf	2
D1 THRU D32	FD1694 OR EQUIVALENT	32
R25, 26	390Ω	2

COMP	QTY.	QTY.	QTY.	QTY.	QTY.	QTY.
R27	3.3K 8	12K 3	12K 3	2.2K 1		
R28	22K 8	68K 3	68K 3	120K 1		
R29	2.2K 8	100K 3	4.7K 3	4.7K 1		
C3	OMIT 8	68μmf 3	68μmf 3	47μmf 1		
Q19	37676-2 8	37676-2 3	37676-2 3	37676-2 1		
R30					4.7K 8	
R31					10K 8	
R32					10K 8	
Q20					3P449 8	

SIGNAL-TERMINAL DESIGNATIONS VIEW FROM BOTTOM (WIRING) SIDE OF CONNECTOR



REVISIONS		TOLERANCES	WANG LABORATORIES INC.	
REVISED WITH EXTENSIVE CHANGES PER MARGED PRINT	REVISED: PER 4/11/67	EXCEPT AS NOTED	SERIAL NO.	TEWKSBURY, MASS.
CHANGED: R30, 1, 1, 3, 15, 17, 19, 21, 23, 25, 26, 27, 29 PER EC# 273	REVISED: PER 5/19/67	DECIMAL	SCALE	DRAWN BY F.S.S.
	DATE 4/11/67	FRACTIONAL	APPROVED BY	
			TITLE	SCHMATIC LOGIBLOC # 510
			PROJECT	X-Y DRIVER
			DATE	5-31-66
			DWG NO.	5473